

Smith Store Locator Module v.2.10



Users' Manual

Table of Contents

| | | |
|------|---------------------------------|----|
| I. | Introduction..... | 3 |
| II. | Installation..... | 3 |
| III. | Setup and Configuration | 7 |
| A. | Manage Retailers..... | 7 |
| 1. | Adding a Retailer..... | 8 |
| 2. | Editing a Retailer | 10 |
| 3. | Deleting a Retailer | 10 |
| B. | Store Locator Setup..... | 10 |
| IV. | Extensions/Customizations | 15 |

I. Introduction

Fully integrated with Google Maps, the Smith Store Locator module can integrate any number of locations onto a map where site visitors can easily access the information they're looking for, as well as Google Driving Directions and Street View options.

If you have multiple locations that your business operates out of, a Smith Store Locator is an important module for your website to utilize! Purchasing your product should always be the easiest thing for a customer to do on your site, and that includes finding physical locations.

II. Installation

The Smith Store Locator module is delivered as a standard DNN installable zip or PA (Private Assembly). You install the Smith Store Locator module just like you would install any other DNN module. Before installing any module it's a good idea to back up your DNN database and DNN installation folder. This is very important, as you can always roll back to previous status easily if installation goes wrong.

Step 1 - Log in to your DNN site using a Host account. From the DNN host menu, select the Module Extensions link to install the module. In order to do that, you should login as host, or an administrator account with module upload permissions.

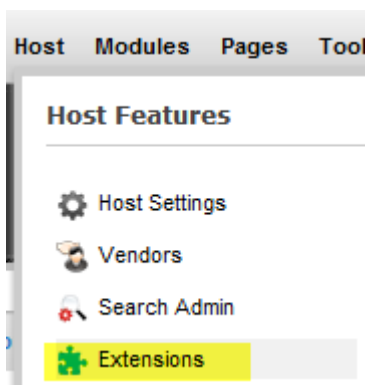


Figure 1 - DNN Host Menu

You can reach Module Extensions from the Host menu item as shown in figure 1 above. Install the new module from the Host -> Modules menu in DNN.

Step 2 - Install New Module

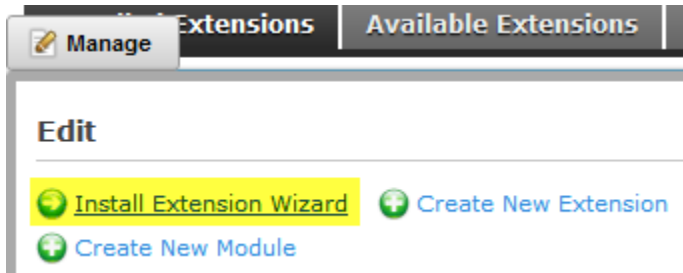


Figure 2 - Module Extensions screen

On the Module Extensions screen (figure 2), choose Install Extension Wizard from the actions menu. This action menu can be either on the left or right side of the main container. It depends on the layout of your current DotNetNuke skin.

Step 3 - Browse the ZIP File

Remember the place where you saved the module ZIP file you downloaded? Then browse it.

Use the Browse button to browse your local file system to find the extension package you wish to install, then click Next to continue

No file chosen

Figure 3 - Browse for the module

Step 4 - Pick the file

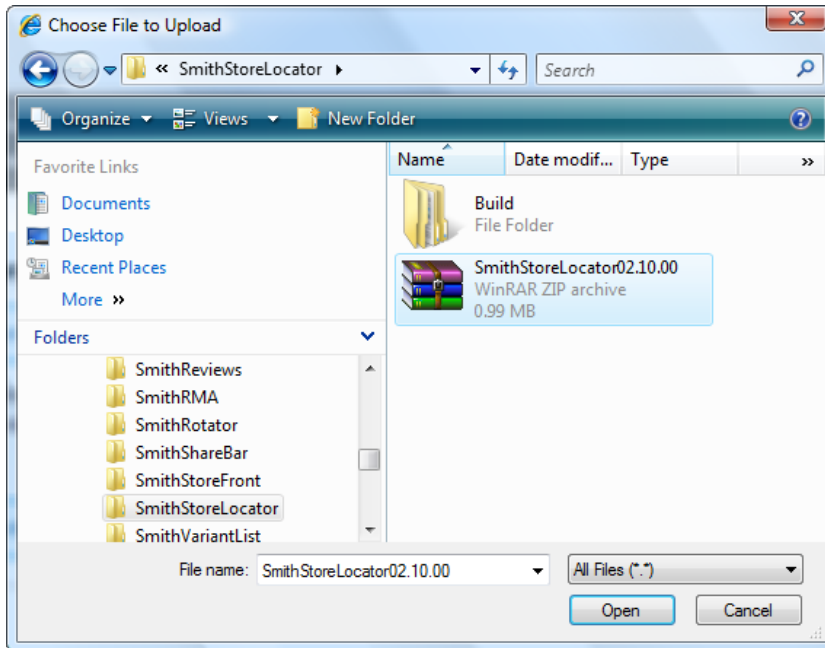


Figure 4 - Pick your module

After you accessed the file, choose it and click Next.

Step 5 - Add the File

The file (with complete physical location) appears in the textbox. Check it once again and then click Next.

Use the Browse button to browse your local file system to find the extension package you wish to install, then click Next to continue.

Z:\SC Modules\SmithStoreLocator\SmithStoreLocator02.



Figure 5 – Install New Module

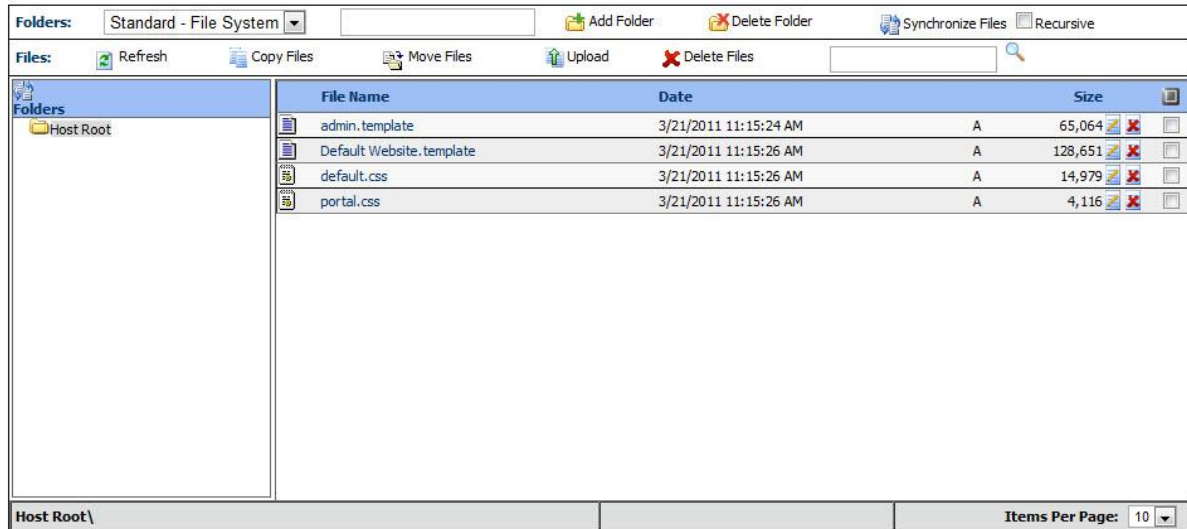
Step 6 – Install it now!

When you see it appear on text area box, click Next and go through the DNN install module wizard.

Step 7 - Module Installed

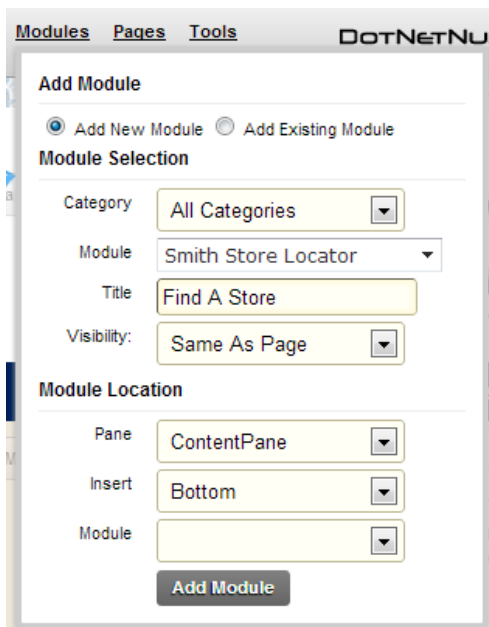
If you do not see any error messages, it means that the module is installed correctly.

Click the Return link.



Step 8 – DNN Install New module log

When everything is OK, you should see the Smith Store Locator module on the Module list on upper panel. Now you can use the module.



Step 9 – Create a new page in your DNN portal and add the Smith Store Locator module to the page.

III. Setup and Configuration

The following sections describe how to configure the Smith Store Locator. To access the settings for your Smith Store Locator Module, follow the steps seen below.

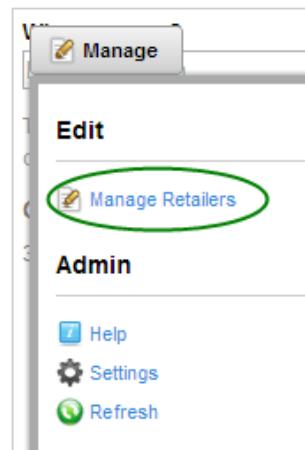
A. Manage Retailers

Retailers are physical locations that are selling and distributing goods to your customers. The Smith Store Locator module allows you to add retailers specifically for your product.

There are two ways to access the Manage Retailers screen. But first, navigate to the page you have the module added to.

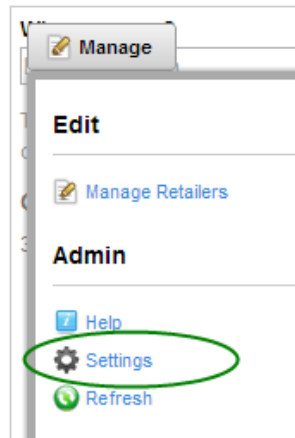
a) Through the Main Module Menu:

Hover over the Manage button and click the “Manage Retailers” link as seen in the screenshot below:



b) Through the Module Settings:

Hover over the Manage button and click the “Settings” link as seen in the screenshot below:



Then, access the Manage Retailers menu from the Settings screen by clicking the “Manage Retailers” button, as seen in the screenshot below:

☐ Manage Retailers

Manage Retailers

1. Adding a Retailer

Once you have entered the Manage Retailers screen, you will need to add a Retailer. To do so, click the “Add” button, as seen in the screenshot below:

Back to Store Locator Manage Retailers **Add Retailer**

Then, fill out the fields as seen in the screenshot below:

[Back to Store Locator](#) [Manage Retailers](#) [Add Retailer](#)

Add Retailer

| | |
|-----------------|---|
| Store Name: | <input type="text" value="Smith Consulting"/> |
| Address Line 1: | <input type="text" value="20 Kendall St"/> |
| Address Line 2: | <input type="text"/> |
| City: | <input type="text" value="Laguna Niguel"/> |
| Country: | <input type="text" value="United States"/> |
| State/Region: | <input type="text" value="California"/> |
| Postal Code: | <input type="text" value="92677"/> |
| Email: | <input type="text" value="support@smith-consulting.com"/> |
| Phone: | <input type="text" value="9498293020"/> |
| Fax: | <input type="text"/> |
| Store Type: | <input type="text" value="Standard"/> |
| ID Number: | <input type="text" value="1234"/> |
| Website URL: | <input type="text" value="www.smith-consulting.com"/> |
| First Name: | <input type="text" value="Smith"/> |
| Last Name: | <input type="text" value="Consulting"/> |
| Notes: | <input type="text"/> |

Store Type – Select from Standard, Elite or Premier to customize the map markers that will appear on the front end of your Store Locator module.

ID Number – Assign a custom ID number to each individual retailer.

Then Click “Add Retailer.”

2. Editing a Retailer

From the Manage Retailers screen, click the “Edit” link:

Manage Retailers

| | Store Name | Address | City | Country | State/Region | Postal Code | Email | Phone | Fax | First Name | Last Name | |
|----------------------|------------------|----------------|---------------|---------|--------------|-------------|------------------------------|------------|-----|------------|------------|------------------------|
| Edit | Smith Consulting | 20 Kendall St, | Laguna Niguel | US | CA | 92677 | support@smith-consulting.com | 9498293020 | | Smith | Consulting | Delete |

You can then go back and change any information affiliated with the Retailer. Your updated information will show up on the Store Locator map.

3. Deleting a Retailer

To remove a retailer from you Store Locator map access the Manage Retailers screen, and then click the “Delete” link:

Manage Retailers

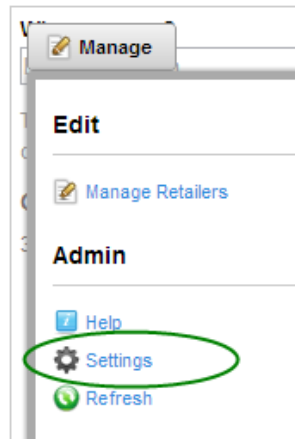
| | Store Name | Address | City | Country | State/Region | Postal Code | Email | Phone | Fax | First Name | Last Name | |
|----------------------|------------------|----------------|---------------|---------|--------------|-------------|------------------------------|------------|-----|------------|------------|------------------------|
| Edit | Smith Consulting | 20 Kendall St, | Laguna Niguel | US | CA | 92677 | support@smith-consulting.com | 9498293020 | | Smith | Consulting | Delete |

The deleted retailer will no longer show up on the Store Locator map.

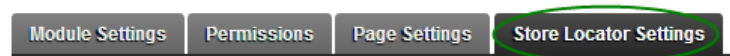
B. Store Locator Setup

To set up the default starting location for your Store Locator map, you must configure your module settings. First, navigate to the page you have the module added to.

Then, hover over the Manage button and click the “Settings” link as seen in the screenshot below:



Then, click the Smith “Store Locator Settings” tab:



You will see the following settings:

Store Locator Setup

Latitude:

Longitude:

Zoom Level:

Use Geolocation?

Latitude – Set a default starting latitude for your Store Locator map, used if your customer chooses not to share their location, or if you do not opt to use the geolocation feature.

Longitude – Set a default starting longitude for your Store Locator map, used if your customer chooses not to share their location, or if you do not opt to use the geolocation feature.

Zoom Level – Set a default zoom level for your Smith Store Locator map.

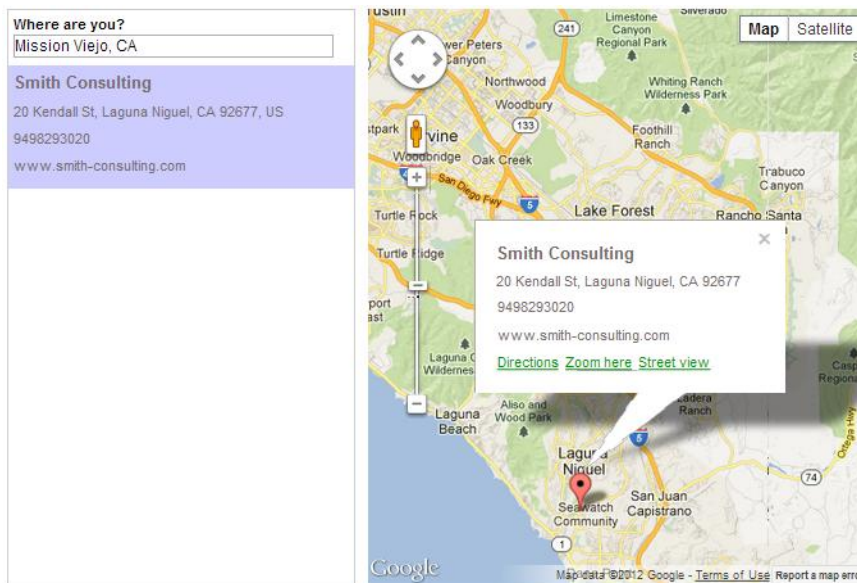
Use Geolocation – Check this box to enable Geolocation. Geolocation is used to automatically detect the geographic location of the user from their web browser.

IV. Using Your Smith Store Locator

Once you have configured your Smith Store Locator module, your customers will not only be able to view all locations on a map, but also utilize the Street View and Driving Directions functionality that Google Maps offers.

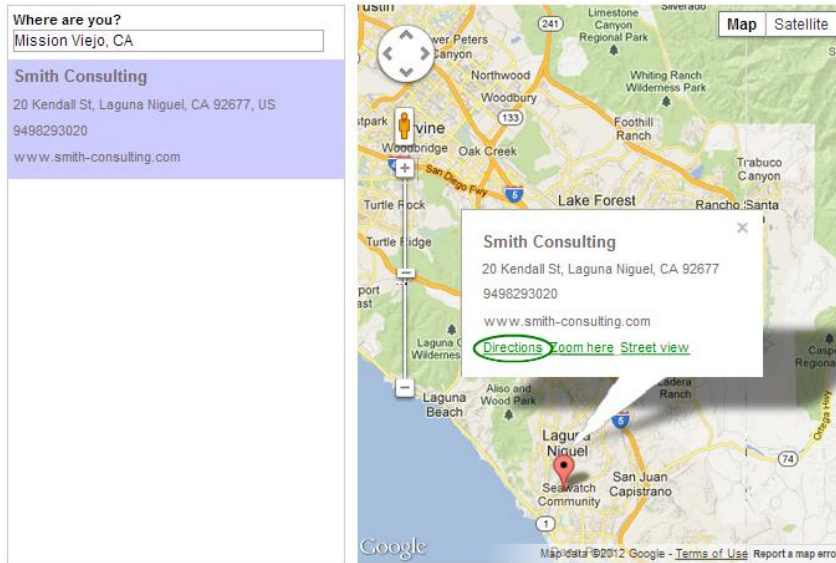
A. Viewing a Location on the Store Locator Map

Once you have configured Retailers, they will appear on the Smith Store Locator map. Please see the screenshot below:

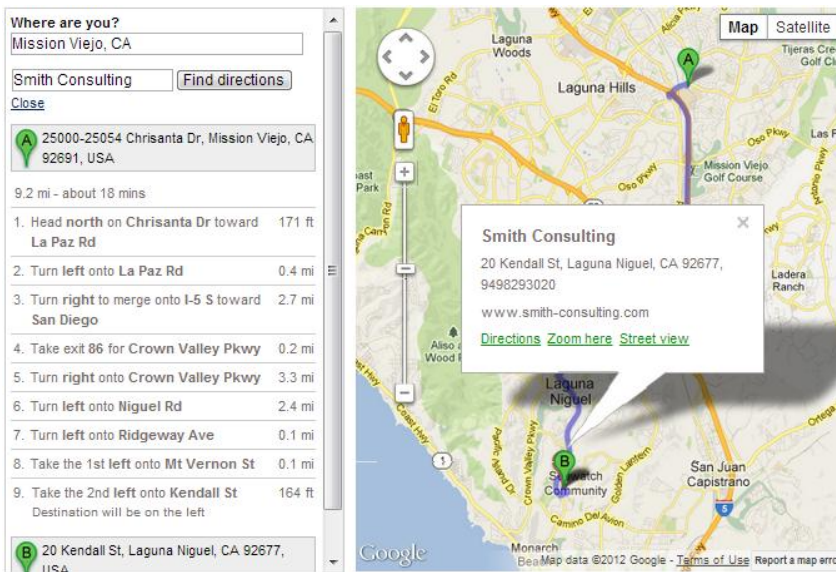


B. Google Driving Directions

Smith Store Locator comes with the Google Driving Directions functionality built in. Click on the Driving Directions link for a specific Retailer, as seen in the screenshot below:

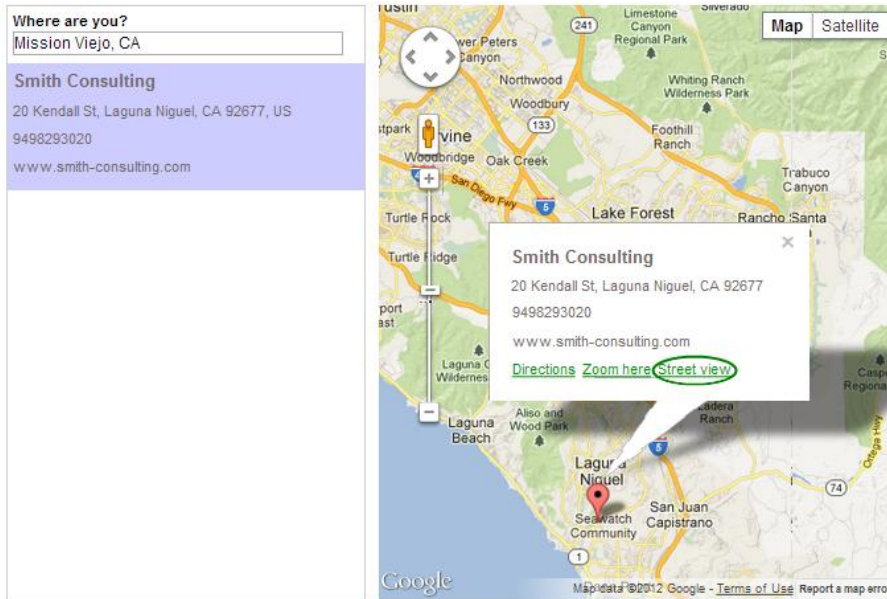


After you click on the link, the driving directions will be seen in the left panel:

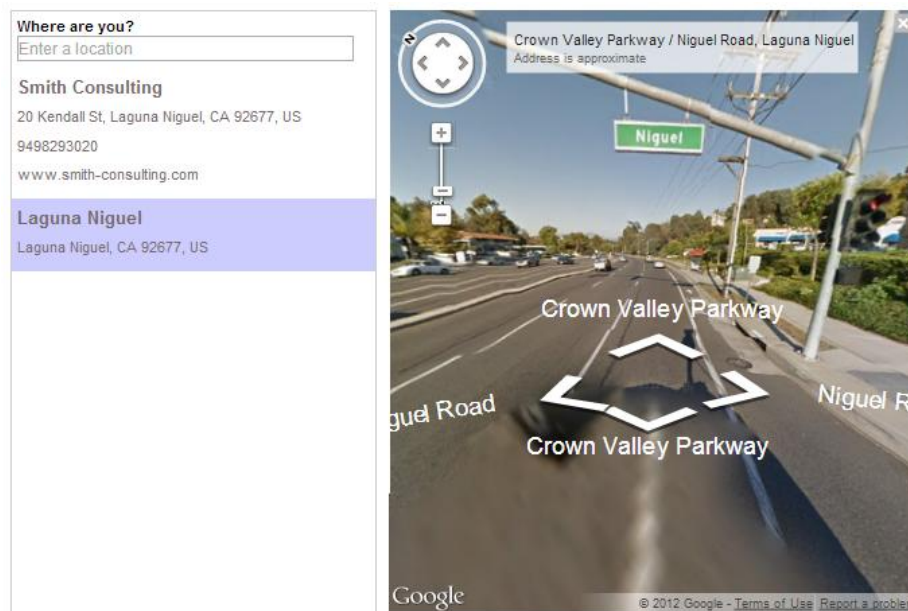


C. Google Street View

Smith Store Locator comes with the Google Street View functionality built in. Click on the Street View link for a specific Retailer, as seen in the screenshot below:



The map will then change into an image of the approximate location of the retailer selected.



V. Extensions/Customizations

The Smith Store Locator module can be extended to fit your business requirements. If you're interested in receiving a quote for customizations please request a quote using the following link:

<http://www.smith-consulting.com/services/requestquote.aspx>